


PORT

BUSINESS UNUSUAL



BUSINESS UNUSUAL

GOLD COAST



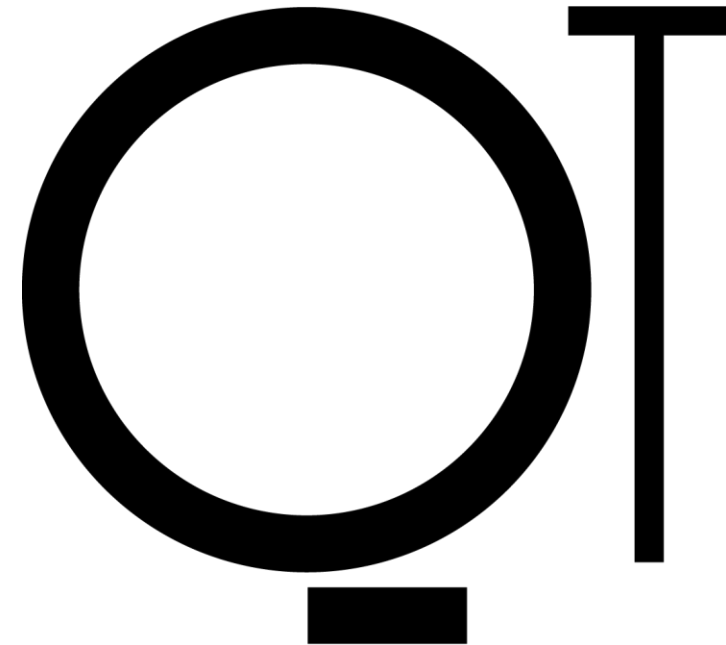
Master the meeting, flirt with formality. QT will circle your attention back to the extraordinary.

Bring your agenda or schedule a spectacular departure from the expected. Whatever you mean by meet, QT is ready to roll.

From company-wide conferences to top-secret and terribly important boardroom meetings, we've got all bases covered. And we'll be there with a refreshing beverage when the conversation concludes.

This is Business Unusual. Enter that into the minutes.

The QT Team





INTRODUCTION

From surf to strategy, board meetings take on new meaning as work and pleasure collide on the Coast.

Brain waves powered by natural ocean energy. Collaboration quantified by coffee and cocktail breaks. Big ideas fuelled by seaside delicacies only a QT chef could dream up.

Our deliverable? Setting the scene for the highest of ceilings; for anything from grand galas to fashion shows, exclusive product launches or executive retreats.

Let's set your agenda, shall we?

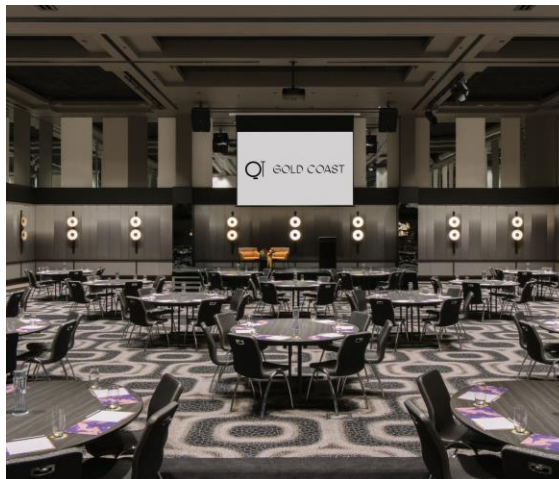
QT BALLROOM

An all-new era of sophistication, one of the Gold Coast's most iconic and spacious ballrooms has been supercharged into revival.

Sprawling the ground floor, this 598-square-metre stunner invites up to 650 delegates into a pillarless paradise — perfect for OTT occasions or up to five separate, sound-proofed sessions.

The Ballroom Foyer's exclusive entryway boasts an open atrium for arrivals or exhibitions, and expansive events can access an outdoor terrace.

With tip-top tech, create mic-drop moments or seamlessly livestream for hybrid meetings without a glitch. If we need to say more, the QT Ballroom isn't for you.



QT BALLROOM FOYER SQM	QT BALLROOM SQM	LENGTH & WIDTH (m)	HEIGHT (m)	CLASS ROOM	THEATRE	BANQUET	CABARET
230	598	29.2 X 20.5	6	300	650	344	300



SUNSET ROOM AND LOUNGE

Share a spectacular moment in this sun-soaked space.

Set your conference ablaze with simultaneous sessions, dividing the dynamic Sunset Room into Sunset 1 and 2. Broaden your horizons even further, with room to move between the main room, balcony and Sunset Lounge down a red carpet like corridor.

Whatever you fancy, Sunset's new-fangled tech will make your event shine even brighter.

Any configuration grants access to a 2.5-metre HD projection screen with seamless collaboration options for the whole group.

SUNSET ROOM

SQM	LENGTH & WIDTH (m)	HEIGHT (m)	CLASS ROOM	BOARD ROOM	U-SHAPE	THEATRE	BANQUET	CABARET	COCKTAIL
192	16 x 12	2.9	80	42	39	160	100	80	140

SUNSET LOUNGE

SQM	HEIGHT (m)	THEATRE	BANQUET	COCKTAIL
180	2.9	150	120	150

2-3

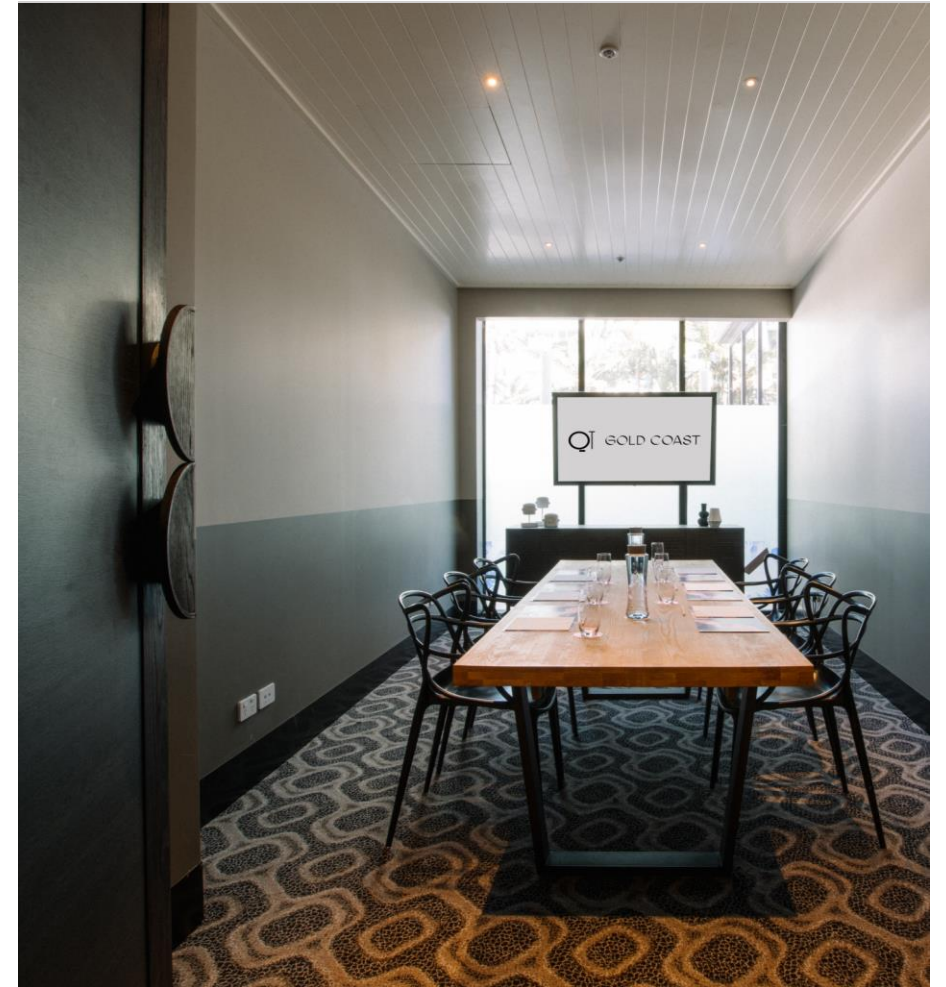
SHORTBOARD

After space for a high-priority huddle, an urgent injection of innovation, or just a quick change of scenery?

Sometimes short and sharp is just what you need.

This is a boardroom reserved for the fast-paced, where big decision-makers don't have to think on their feet. So claim your spot, the table is permanently set for only eight minds to meet.

Where ideas walk in and outcomes emerge.



SQM	LENGTH & WIDTH (m)	BOARD ROOM
16.5	5.5 x 3	6



MALIBU

SQM	LENGTH & WIDTH (m)	HEIGHT (m)	BOARD ROOM	CLASS ROOM
118	9.6 x 6.3	3.5	20	40

MALIBU

Balmy nights are best enjoyed in Malibu delight. Flow from the timber-ceilinged indoor space to an airy terrace for an al fresco affair overlooking the Gold Coast Hinterland.

Inspired by intimate backyard gatherings, a wood-fired oven, smoker and Argentinian grill bring

laid-back barbeque vibes to any event.

To play host with the most, extend onto The Landing, a spacious lawn looking out to beachy blue hues and amidst the rooftop oasis that is qtQT.

— NORTHBREAK AND SOUTHBREAK

North of normal, breaking away from standard. This second-level scene is perfect for offbeat out-of-office experiences.

Two relaxed, sunny spaces boast tech as impressive as their Pacific views. Think 110-inch screen projection with wireless connection, powerful audio and touch panel control.

Pick your preferred room, or have North meet South to double the capacity. Cover off all directions of thought, or use one as a breakout to add interludes fuelled by chef-designed food.



3-7

SQM	LENGTH & WIDTH (m)	HEIGHT (m)	CLASS ROOM	BOARD ROOM	U-SHAPE	THEATRE	BANQUET	CABARET	COCKTAIL
50	6.7 x 7.6	3	24	12	16	30	30	24	50



CLouDBREAK

Settle in for brainstorm in the
pinnacle of productivity on Level 2.

Free from outside distraction and filled
with industrial-chic ambience, Cloud
Break is the place to get things done.

Wow with new tech; a sharp 110-inch
projector screen, touch panel control
for wireless sharing from your device,
and hearing loop technology
for powerful audio.

SQM	LENGTH & WIDTH (m)	HEIGHT (m)	CLASS ROOM	BOARD ROOM	U-SHAPE	THEATRE	BANQUET	CABARET	COCKTAIL
82	9.15 x 9.7 5	2.4	35	21	21	70	48	48	80

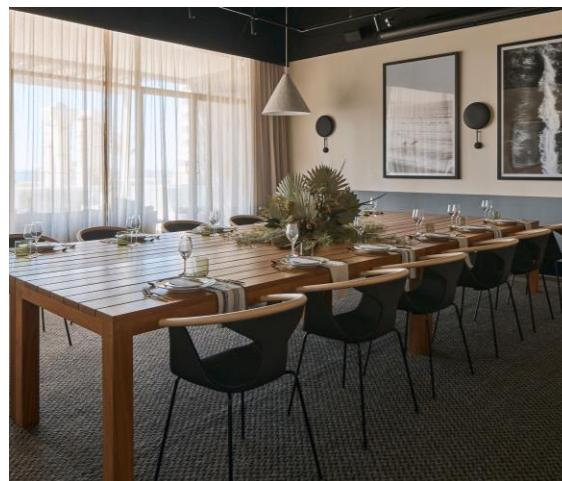


LONGBOARD

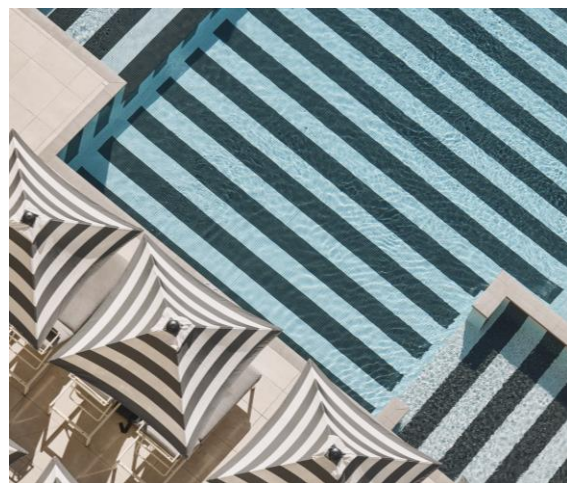
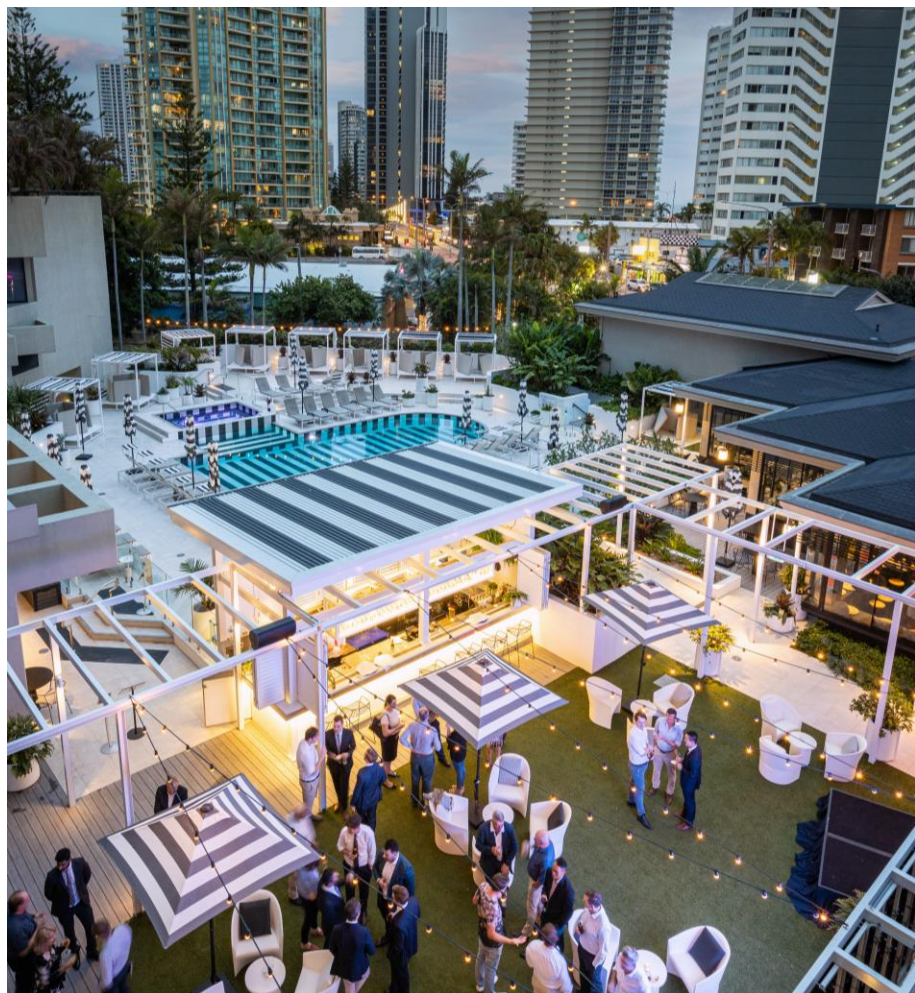
Pitches, negotiations, and everything in between. Here's where to get everyone on board.

An all-inclusive on Level 2, Longboard is perfect for big breaks, surrounded by a relaxed design seen in concrete surfaces and industrial trimmings.

High spec tech will suitably impress VIPs. With an ocean-view outdoor patio, Longboard is all-inclusive for making big waves.



SQM	LENGTH & WIDTH (m)	HEIGHT (m)	BOARD ROOM	COCKTAIL	BANQUET
41	7.4 x 5.6	2.8	10	30	10



THE GREEN

Hosting up to 100 guests, The Green typifies QT Gold Coast's relaxed sense of luxury.

The 185 square metre outdoor space contrasts bright tropicana textiles with a minimalist white and ivory palette and QT's signature crisp black and white stripes, all set amongst an oasis of lush greenery.

Set alongside the luxurious pool, The Green is the setting for events that will transport guests to where they'd rather be.

The space features a central bar, mod grass, a 3.5m LED screen, festoon lighting, state-of-the-art audio visual and chic furniture. The new precinct radiates relaxed-luxe on its own or can be transformed for special occasions and brand moments.

Suitable for night events.

Curfew and noise restrictions apply.

COCKTAIL

104

CABARET

80

BANQUET

80

THE MEZCAL

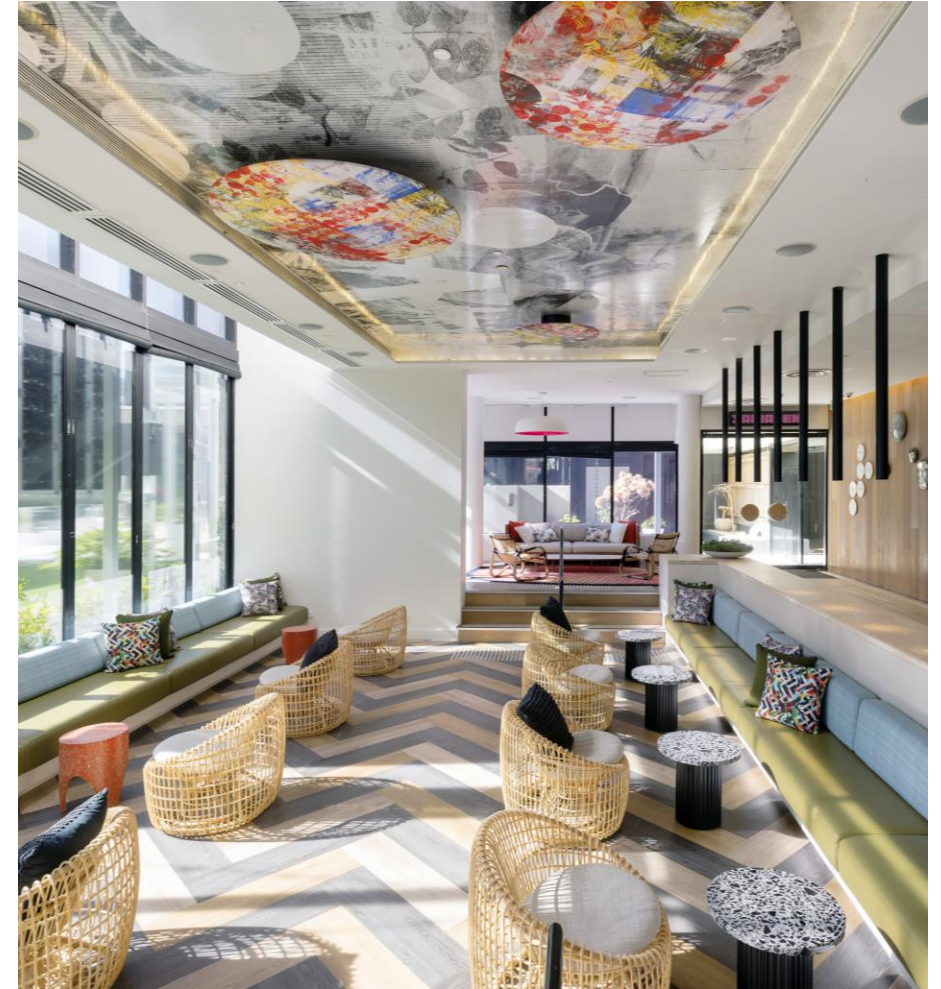
Bold, sleek and very boutique. Creatively charged, this is a sophisticated party playground like no other.

Boasting a Miami resort style, this chic space oozes character and intrigue. Rattan furniture, eclectic décor and signature QT tones, this intimate space is perfect for welcome drinks, cocktail parties, product launches and more.

Catering up to 50 guest's cocktail-style, suitable for both corporate and social occasions.

Functions held at The Mezcal require our signature pop-up bar. You will have a private bar setup and a personal bartender dedicated to your event. \$250 hire fee

(not inclusive of your beverages).



VENUE CAPACITY	THEATRE	BANQUET	CABARET	COCKTAIL
50	40	25	20	80



CONFERENCE & MEETING ROOM CAPACITIES

	Room Names	Ceiling Height (m)	Dimensions (m)	m ²	Class	Board	U-Shape	Theatre	Banquet	Cabaret	Cocktail
Ground	Pipeline	6	19.2 x 20.5	394	204	-	56+	435	200	168	420
	Pipeline 1	6	10.2 x 20.5	210	96	42	50	216	-	84	200
	Pipeline 2	6	9 x 20.5	184	84	42	42	216	-	84	200
	Maui	3.5	10 x 20.5	205	96	42	45	216	-	84	200
	Maui 1	3.5	7.4 x 5.7	42	18	12	15	40	-	16	40
	Maui 2	3.5	7.4 x 6.2	45	27	22	21	65	-	32	60
	Maui 1 & 2	3.5	7.4 x 11.9	88	54	36	39	60	-	48	120
	Maui 3	3.5	5.7 x 10	57	24	24	24	48	-	16	50
	QT Ballroom	6	29.2 x 20.5	598	300	-	-	650	344	300	650
	Ballroom Foyer	6	-	230	-	-	-	-	-	-	300
Level 1	Sunset 1	2.9	9 x 7	63	27	16	21	50	30	24	50
	Sunset 2	2.9	9.5 x 7.5	71	27	22	26	60	30	32	60
	Sunset	2.9	16 x 12	192	80	42	39	160	100	80	140
	Sunset Lounge	2.8	-	180	-	-	-	-	120	-	150
	Shortboard Room	2.8	5.5 x 3	16.5	-	8	-	-	-	-	-
Level 2	South Break	3	6.7 x 7.6	50	27	18	18	40	30	24	60
	North Break	3	6.7 x 7.6	50	24	27	18	40	30	24	50
	Malibu	3.5	9.6 x 6.3	118	40	20	-	-	-	-	100
	Malibu Terrace	-	19.8 x 17	336	-	-	-	-	-	-	-
	Malibu Lawn	-	-	-	-	-	-	80	-	-	100
	Cloudbreak	2.4	9.15 x 9.75	82	35	-	21	70	48	48	80
	Longboard	2.8	7.4 x 5.6	41	-	10	-	-	-	-	30



SEATED
CAPACITY

175



BAZAAR

Pack your passport for tastes unknown, Bazaar is your marketplace of global flavours. For those seeking out delicious treasures, we've mapped out your pursuit of street food pleasures. From Middle Eastern souk to Latin American bodega, tradition marks your Gold Coast dining spot.

Serving vibrancy by design and dishes made to order, this is a reinvention of hotel dining for the gastronomic explorer. Slow-cooked meats and fresh seafood peppered with innovative spice.

Perfect for group dinners, working lunches and available for exclusive use of up to 200 guests, Bazaar's unique design allows creativity to flow with a spread to tell the tale.



qtQT

Meet qtQT, where laid-back flirts with luxe atop the Gold Coast's most-loved designer playground.

An urban oasis of lush greenery and open space surrounded by The Terrace, The Landing and The Fireplace. From weddings full of wonder to off-beat corporate retreats, there's ample area for events as large as your imagination.

The Terrace is where a whole suite of culinary experiences meets al fresco dining; with an outdoor kitchen equipped with Argentinian grill, smoker, wood-fire oven for bespoke feasts.

Meditate, celebrate, and everything in between. Then when the day is done, a collection of cabins offer solo sanctuaries to recharge for adventures anew

YAMAGEN

Traditional Japanese cuisine alive in a playful Tokyo dream.

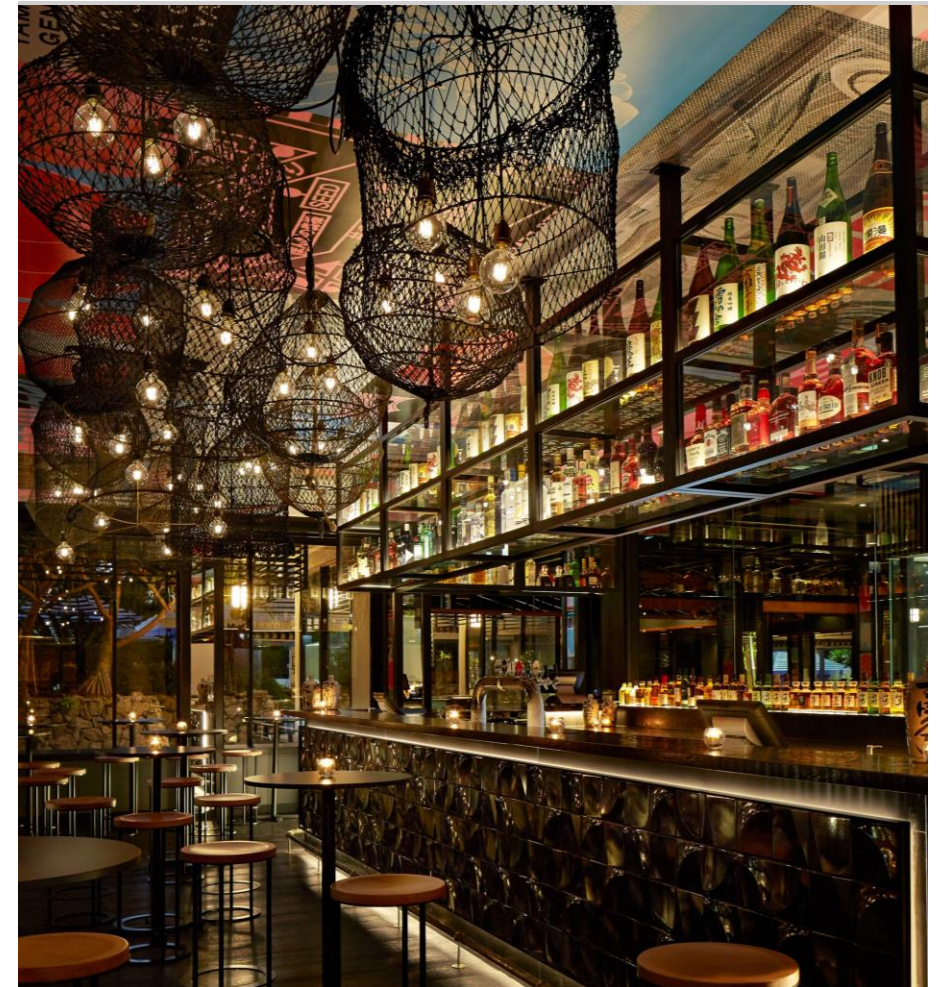
Neon lights and statement style, Yamagen is where you'll taste it. An izakaya dining experience made to share for a night of vibrant refined flavours.

Smoking signature kushiyaki, sushi and delicate market fresh sashimi.

With Omakase dining we let you choose your own food adventure.

Drink to vibrant nights and relaxing times by indulging in the country's most extensive Japanese whisky collection.

Available for Omakase set dinners of up to 50 guests and exclusive use cocktail events of up to 200.



VENUE
CAPACITY

60



STINGRAY

A legendary bar on the Gold Coast, Stingray Lounge offers a daring cocktail list and an attractive vibe.

Seven lounge-style booths surround the main bar from the entrance up to the dance floor, providing plenty of spots to sip and chat. Each booth is perfect for groups of up to 20 guests.

The raised lounge is equipped with funky furniture to ensure optimal comfort for you and your guests and is ideal for groups of up to 30 seeking a little more exclusivity with a VIP edge.

Stingray is also available for special events and exclusive use for up to 600 guests.

Stingray's resident DJ performs every Friday and Saturday night from 6pm til late and is available for special events upon request.



VENUE
CAPACITY

300

RAISED
LOUNGE

30

STINGRAY
LOUNGE
(7 AVAIL)

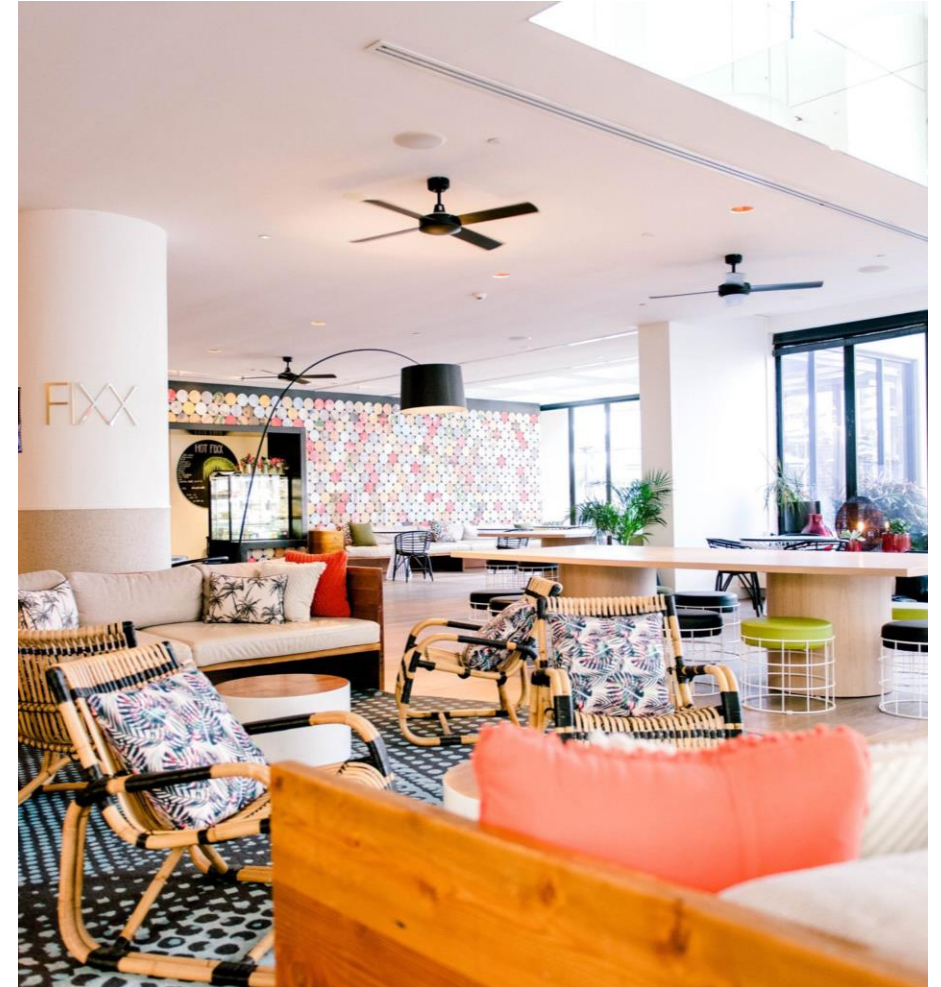
20

FIXX

Impossible to resist event spaces and experiences for your next baby shower, bridal shower or birthday party.

FIXX creates the perfect place to be creative.

Located on the ground level, floor to ceiling windows and vibrant furnishing that set the theme for any event. Perfect for your next high tea experience.



VENUE
CAPACITY

60



STAY A WHILE

When the wheeling and dealing is done, kick back in your very own oasis, or let loose in a sprawling designer playground. Treat the team to refreshed rooms with bold design, bursting with Gold Coast glory and the spirit of Santa Monica.

Before the big event, keep your cool from the comfort of QT Dream Bed bliss, with private balconies and bathrooms stocked with little luxuries care of Kevin Murphy, Missoni and Dyson. Then simmer down poolside, celebrating the success of a meeting well played.



QT GOLD COAST ROOM TYPES

Open the door to your personal paradise. Where good times and downtime collide in a perpetual state of bliss. Follow the high tide or lay low, you choose your moment to shine. Plenty plush with Queenslander character, you'll feel right at home in the comfort of this splash pad.

Playful pops of colour and chic vintage vibes, the quintessential culture of the Coast is alive and well inside. So come on in, the air is salty and the design is fine.



QT DELUXE KING OCEAN VIEW SUITE

From floor 15 and up, you'll find the swankiest suites.

For endless views of the ocean, make a date with dawn to watch the rising rays from the altitude of your private balcony. Or recline in the designer shade of your separate lounge, absorbing the artful aura of luxury.

Your extra-large bathroom comes with all the lavish particulars, like a deep soaking tub, Kevin Murphy amenities, a Dyson Supersonic and Missoni robes. Anything else? Just tap your QT tablet for extra add-ons ordered on demand.



QT KING OCEAN VIEW SUITE

Royal-level luxury, rich with panoramic perspective.

Glistening water as far as the eye can see. Wake up in a glowy state of mind, reveling in the rising sun. These spacious quarters mean you can seriously spread out, drifting from your private balcony perch to the separate lounge area and roomy bedroom suite.

Dripping in luxe, in the bathroom you'll find a delightfully deep tub, plus Kevin Murphy amenities and a Dyson Supersonic. May we suggest your Missoni robe as the perfect post-soak attire?



QT DELUXE OCEAN VIEW KING

Above it all, luxury is dialed all the way up. Bold and bright design crash against the coastal calm, right over the ocean.

Your QT Dream Bed and private balcony view provide the perfect panorama to catch glistening glances. Don your Missoni robe for complimentary morning Nespresso, or dial up the drama and primp with Kevin Murphy amenities and a Dyson Supersonic.

Sunshine to limelight, right this way.



QT KING OCEAN VIEW

Where good times and downtime collide.

Rise refreshed for another sun-kissed day and soak in the golden glow from your private balcony. Robed in Missoni, locks waved with Dyson, pamper yourself with Kevin Murphy amenities.

Or kick back with complimentary Nespresso and T2, and settle in for uninterrupted views of the great blue yonder. When the day is done, doze in the folds of a king-sized QT Dream Bed.



QT DELUXE OCEAN VIEW TWIN

Perched way up high, share in the delight of double the decadence.

Contemporary luxe meets bold boho chic in this room design for discerning eyes. A pair of queen QT Dream Beds begging to be ruffled, tumble into slumber after a day of sun-soaked revelry.

Pour the complimentary Nespresso and T2 teas, meet for a beat on your private balcony before seizing a brand new day, together. Missoni, Dyson and Kevin Murphy amenities will accompany you as you get ready for any escapade you've lined up. Bold hues and sprawling ocean views are served for up to four.



QT TWIN OCEAN VIEW

An ocean view worth sharing.

Room for togetherness, splash out with mates, or stay in with the family. Slip into simultaneous slumber in twin queen QT Dream Beds, then rise and shine to witness the sun's daily debut from a private balcony.

All your group's fresh-air fancies are catered for — from matching Missoni robes and Kevin Murphy amenities, to tech touches like a Dyson Supersonic and QT tablet, plus Nespresso pods and T2 teas to drink in the seaside bliss.



QT DELUXE CITY VIEW KING

On top of the town, take in the iconic Gold Coast city
view from floor 22.

Float from your plush king QT Dream bed to a window-side daybed,
and back again. Emerge from your perch (if you must) pampered
in Kevin Murphy amenities and waves styled by the Dyson
Supersonic.

Or just get dressed up in your Missoni robe, with nowhere to go but
the here and now. Sip on Nespresso and T2 teas, or tap your tablet
to call upon a selection of room service delicacies. In a sanctuary
like yours, the joy of missing out just got even more ecstatic.



QT KING CITY VIEW

A vibrancy to rival the city below.

Drawing eyes by design, this cityside haven is popping with brilliance and buzz. As another dreamy day comes to a close, watch the sun dip down over town from your private balcony — all before you spread out in the softest king bed.

In the morning, slip into your Missoni robe and freshen up in a bathroom stocked with sumptuous Kevin Murphy amenities and a Dyson Supersonic hairdryer. Kitted out with all the complementaries you need, your very own oasis includes Nespresso pods and T2 teas.

This cityside serenity sleeps a max of three. of a meeting well played.



QT TWIN CITY VIEW

Double the beds mean double the fun.

Flow on the frequency of the city's vibrations from your window before you enter the fray and get lost in the night. Refresh after the day's debauchery in a bathroom stocked with a Dyson Supersonic and Kevin Murphy amenities. Then watch the sun slip away from the pleasure of a private balcony.

There's Nespresso coffee and T2 tea too, best enjoyed whilst robed in matching Missoni. This room sleeps up to four, but that doesn't mean you have to.

T2 teas to drink in the seaside bliss.



qtQT CABINS

More than meets the eye, your cosy cabin is filled
with QT's signature splendour.

Designed for discerning creatures of comfort, here it's all soft textures and lived-in linen luxury. Unplug, without the distraction of television where layers of pattern and colour connect barefoot indulgence to the blissful outdoor oasis.

From switching off to oh it's on.

qtQT Cabins are packed with luxe amenities from around the neighbourhood; Robes and bedding from I Love Linen in Burleigh, Saya Skincare amenities from Noosa, Drift Candles from Currumbin and Harvest Clay ceramics crafted in the Gold Coast.



7 Staghorn Ave, Surfers Paradise, QLD 4217

PHONE: +617 5584 1200

EMAIL: sales_qtgoldcoast@evt.com

WEB: qtgoldcoast.com

SOCIAL: facebook.com/QTGoldCoast

[@qtgoldcoasthotel](#) [#QTLife](#)